

Installation Manual
Crown Molding Cap

vogue™ cluster box
accessories

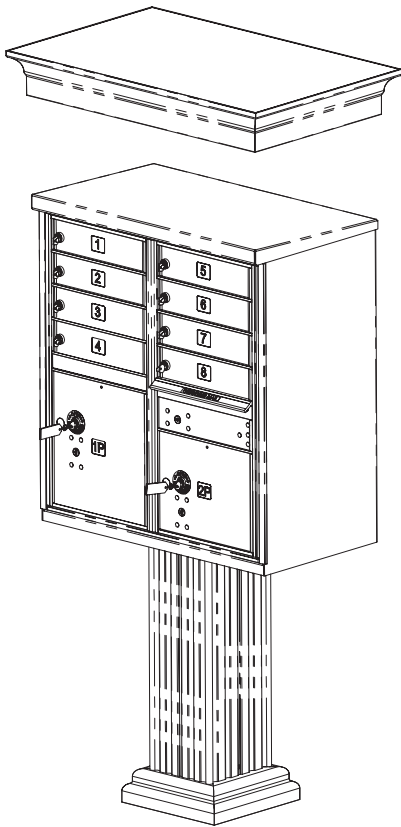


TABLE OF CONTENTS

Description	Page
Multi-unit Pad Specification	3
Crown Molding Cap Installation	4

AF

FLORENCE
manufacturing company

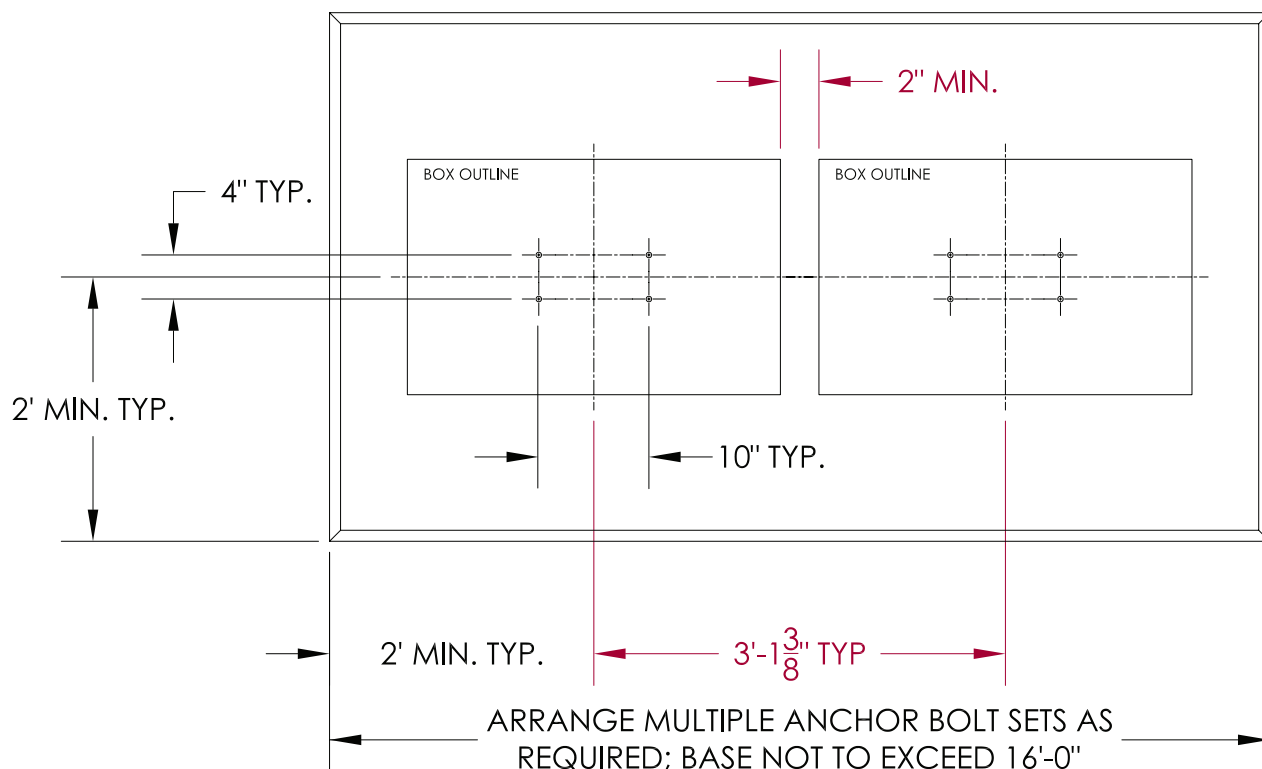
5935 Corporate Drive • Manhattan, KS 66503
www.auth-florence.com • (800) 275-1747

A GIBRALTAR INDUSTRIES COMPANY 

This Page Intentionally Left Blank.

vogue™ cluster box accessories

Multi-unit Pad Specification



Caution

Due to the design of the Crown Molding Cap you cannot use the standard spacing for mounting the cluster box units into the concrete pad because the caps will interfere with each other. The cabinets must be a minimum of 2" apart. Please use the chart above to ensure proper spacing.

All other requirements for mounting the cluster box unit are in the cluster box installation manual, included with your Florence vital™ 1570 series cluster box unit.

Technical documents are downloadable from www.auth-florence.com

Crown Molding Cap Installation



Prior to installation, read notice regarding multi unit pad specification on page 3 of this manual.

1. Clean top, sides and back of cluster box unit, to clear any surface dirt or debris with a soft damp cloth.

2. Using the supplied alcohol wipes, clean the indicated surfaces of the front and rear of the cluster box unit top surface.

3. Remove cover strips of the double-sided tape on the underside of the cap.

4. Align the cap over the cluster box unit with the lower tape strip edge to the back of the cluster box unit.



Note: Step 4 is the most critical step of the installation. Make absolutely certain the rear lower tape strip edge of the crown molding cap is installed to the rear of the CBU top.

5. Press down firmly along the front edge and rear edge of the cap to ensure tape is secured.

Note: Once cap is securely in place, the adhesive tape forms a permanent bond. Cap is very difficult to remove after placement and should be considered permanently installed.

REQUIRED TOOLS		PART #	DESCRIPTION
None		VOGUEC1	Crown Molding Cap (Specify Finish)

Crown Molding Cap Installation

