

Antique Rural Mailboxes



4850-A



#4850-A on a 1-sided deluxe post (#4870) mounted on the right side (see page 55) in brass finish with custom numbers / letters (see page 79) displayed

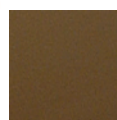
ANTIQUE RURAL MAILBOXES U.S.P.S. APPROVED

Made entirely of aluminum, Salsbury U.S.P.S. approved 4800 series antique rural mailboxes are available in four (4) attractive powder coated finishes. These mailboxes provide an antique look that adds elegance to any home. Each antique rural mailbox features a 1/8" thick extruded aluminum body and a 1/8" thick die cast aluminum front door and rear cover. Each mailbox includes a magnetic door catch and an adjustable burgundy signal flag. The die cast door is attached to the body with a full width stainless steel hinge allowing for smooth operation. See additional specifications on page 45. Antique rural mailboxes can be mounted on standard, classic, decorative or deluxe mailbox posts (see pages 52-55), spreaders (see page 52) or a base of your choice. Antique rural mailboxes are approved for U.S.P.S. curbside mail delivery.

4850-A Antique Rural Mailbox

- 7-1/2" W x 9-1/2" H x 20-1/2" D
- 15 lbs.
- \$100.00

Specify



Bronze



Copper



Brass



Nickel

custom
Numbers / Letters see page 79

REPLACEMENT FLAGS

Made of heavy duty 1/4" thick die cast aluminum, antique mailbox replacement signal flags have a durable powder coated burgundy finish and easily attach to antique rural mailboxes. Mailbox flags include stainless steel mounting hardware.

4816-A Replacement Flag

- 2-3/4" W x 8" H x 1/4" D
- 1 lb.
- \$10.00



4816-A

ANTIQUE NEWSPAPER HOLDERS

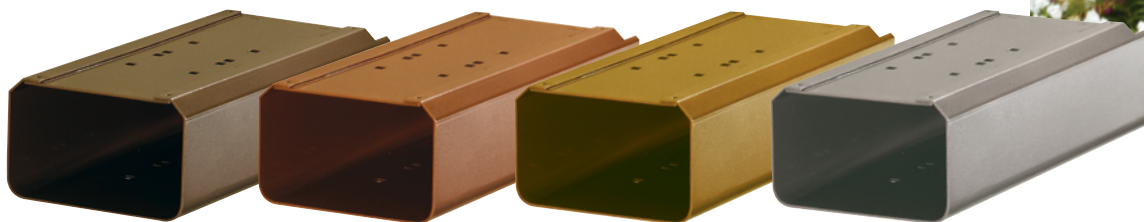
Made of heavy duty aluminum, Salsbury antique newspaper holders are a unique option for antique rural mailboxes. Each unit has a solid back and includes mounting hardware to easily attach to mailbox posts and spreaders (see pages 52-55). Antique newspaper holders are available in four (4) attractive powder coated finishes.

4815-A Antique Newspaper Holder

- 7-1/4" W x 4-1/2" H x 16" D
- 10 lbs.
- \$40.00

Specify

- Bronze
- Copper
- Brass
- Nickel



4815-A



(2) #4850-A's and (2) #4815-A's on a two (2) wide spreader (#4882) mounted on a standard post (#4865) (see page 52) in bronze finish displayed

Deluxe Rural Mailboxes - U.S.P.S. APPROVED

Made entirely of aluminum, Salsbury U.S.P.S. approved 4800 series deluxe rural mailboxes feature a 1/8" thick extruded aluminum body and a 1/8" thick die cast aluminum front door and rear cover. Deluxe rural mailboxes also feature a durable textured powder coated finish available in two (2) colors and include an adjustable burgundy signal flag and a magnetic door catch. A full width stainless steel hinge attaches the die cast door to the body allowing for smooth operation. See additional specifications on page 45. Deluxe rural mailboxes and optional matching newspaper holders can be mounted on standard, classic, decorative or deluxe mailbox posts (see pages 52-55), spreaders (see page 52) or a base of your choice. Deluxe rural mailboxes are approved for U.S.P.S. curbside mail delivery.

Featuring an Elegant Textured Finish



4850-D

4850-D¹ Deluxe Rural Mailbox

- 7-1/2" W x 9-1/2" H x 20-1/2" D
- 15 lbs.
- \$100.00

4815-D¹ Deluxe Newspaper Holder

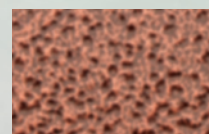
- 7-1/4" W x 4-1/2" H x 16" D
- 10 lbs.
- \$40.00



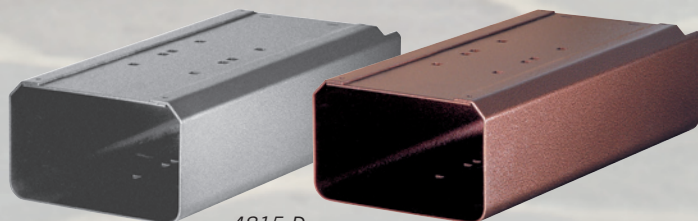
¹ Specify



Pewter



Mocha



4815-D